

SMART-PTT

Network Trunking Intercom System

Technology Solutions

Shenzhen Corget Technology Co., Ltd.

Erica Zeng

Mob/Whatsapp:0086 15818628285

Email:erica@corget.com

wendy.corget.erica@yahoo.com

Skype:gracesolar029

1. PTT Dispatcher Station

1.1 Interface Instruction

1.2 Usage

1.3 Missed Calls List

1.4. Received Message List

1.5 Sent Message List

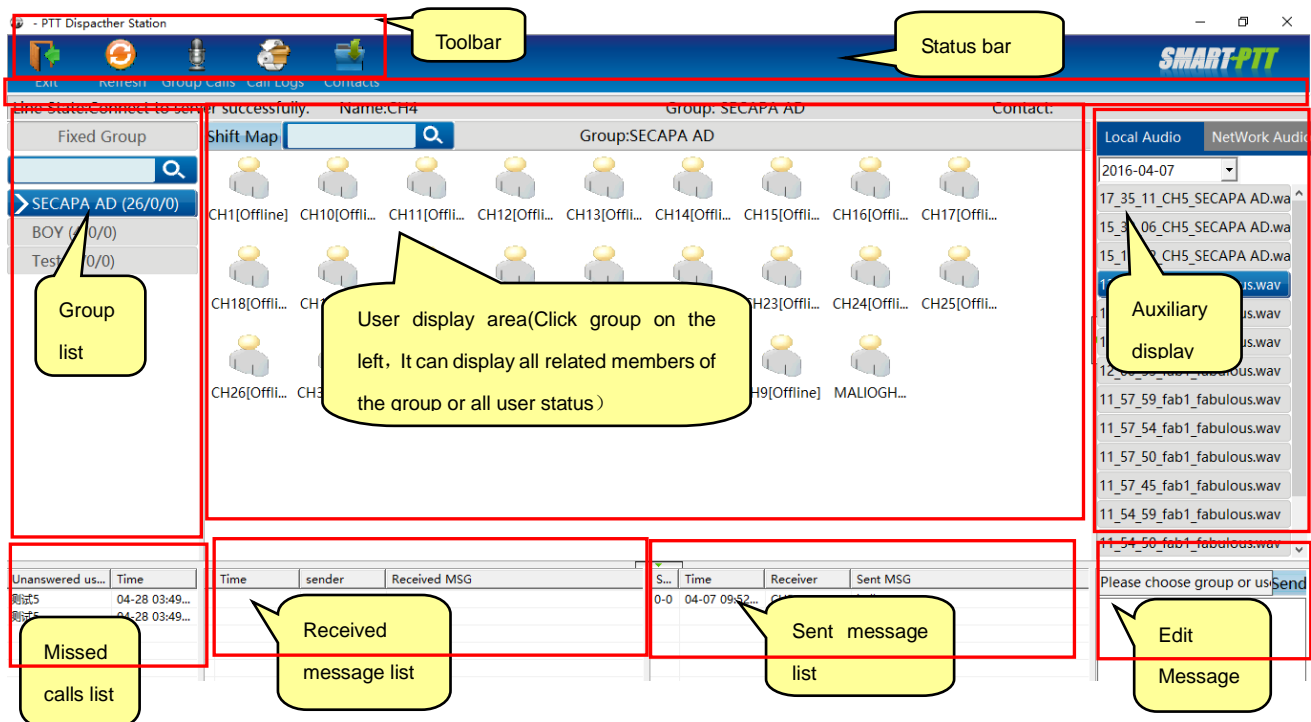
1.6 Message Sent area

1. Dispatcher station

SMART-PTT Dispatcher station, which is based on multifunctional and visualization dispatching system, It includes private call, group calls, sending message, inviting dynamic group, disconnecting, stuning, monitoring, GPS positioning etc. It can provide timely dispatching function for company. Operation environment of RealPTT Dispatcher station is Windows XP, it is recommended to use 1024 x768 screen resolution.

1.1.Interface instruction

1.1.1. After the user has successfully logged dispatcher station, the system automatically displays the main interface dispatch operations



dispatch station master interface

As shown above, master interface of dispatch station consists of the following components:

- **Toolbar:** It provides "exit", "refresh", "group calls", "call logs", "contacts" and "audios", etc, it can help users to quickly view.
- **Status bar:** It can display the network state of dispatch station, the group info, the name of login in and the speaker info, etc.
- **Group list:** It is on the left side of master interface, it can display all groups and group information.
- **User display area:** It is on the right side of group directory, It can display information and status of group members.
- **Auxiliary display area:** it is right side of user display area, It is mainly assist dispatch station functions display, such as viewing friends, viewing audios, etc.
- **Missed calls list:** It is lower side of the group list, when other users make a private call ,as the dispatch station are on conversation, he can't answer calls.
- **Received message list:** It is on the left of missed call list, It shows all the received info.
- **Sent message list:** It is on the right of received message list, It displays all the information has been sent.
- **Message sent area:** It is on the lower right corner, It can edit the message to be sent.

User status can be displayed by icons, the meaning is as follows:



User online

User status icon: It shows that user is online but not in the current group, so he can't hear current group speech, at the same time he can't speak in the current group.



Users in the group

User status icon: the user is in the currently selected group, he can make calls directly to the group.



Offline status

User status icon: the user is not online, he can't hear speech of current group.



Users in the group

User status of map mode: the user is in the currently selected group, he can make calls directly to the group, It mean this user can directly hear speech of the current group.



User online

User status of map mode: It shows that user is online, but he can't hear the current group speech, at the same time also he can't speak in this current group.

1.2.How to use

1.2.1. Login Settings

After run the dispatch station, you can enter login interface of client program,as shown below. When you login ,you need to input account and password, select area and also you can save the password, It can reduce troubles when you login this screen every time.

SMART-PTT Dispatcher-V3.4

Account: ch4

Password: *****

Area: Asia

☒ Sa

Europe
Asia
TaiWan
Singapore
Malaysia

Login Exit

1024X768 resolution is recommended

1.2.2. Tool bar



- Exit: logout this dispatch station.
- Refresh: refresh the user and group info.
- Group calls: make calls to all members in this group, if the dispatch station is on the

group of a private call or dynamic group calls, it shows a private call or dynamic group calls.

- Call logs: It can view this recent call logs, calls logs can be displayed in the right auxiliary display area, it is shown in figure 1, It can show these call logs when you double-click each record.
- Contacts: It shows friends and status of the dispatcher, It is shown in figure 2. You can make a single call to the user when double-click this user, when you open right menu, it can operate "send a message" and "inhibition" operation and so on for the selected user.

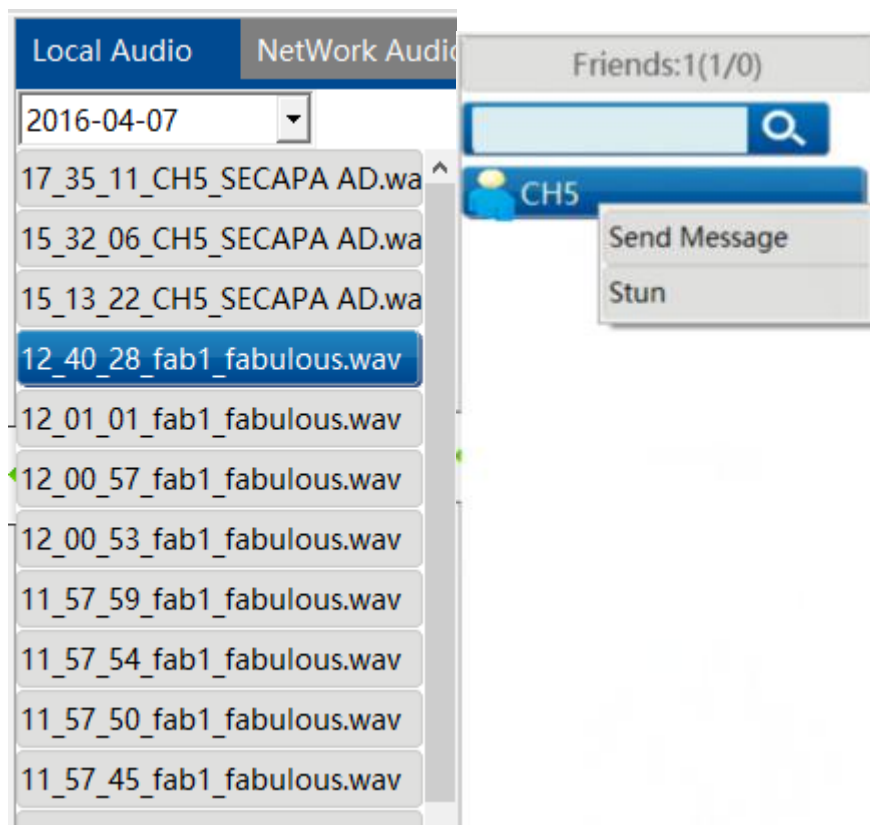
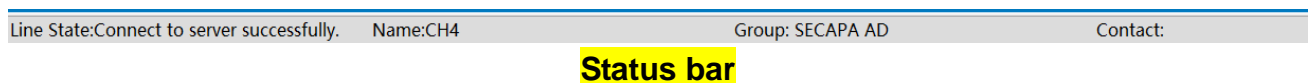


Figure 1

Figure 2

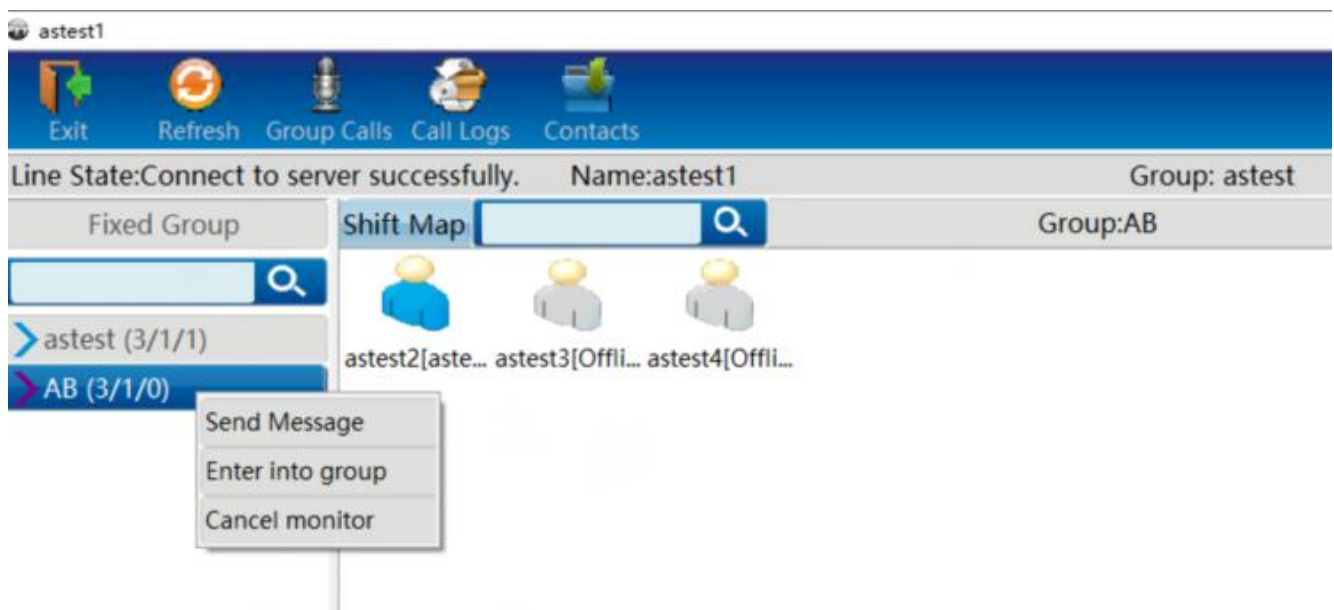
1.2.3. Status bar

The status bar display: network connection status, the dispatch station name, dispatch station group, speech user info, etc.



1.2.4. Group operation

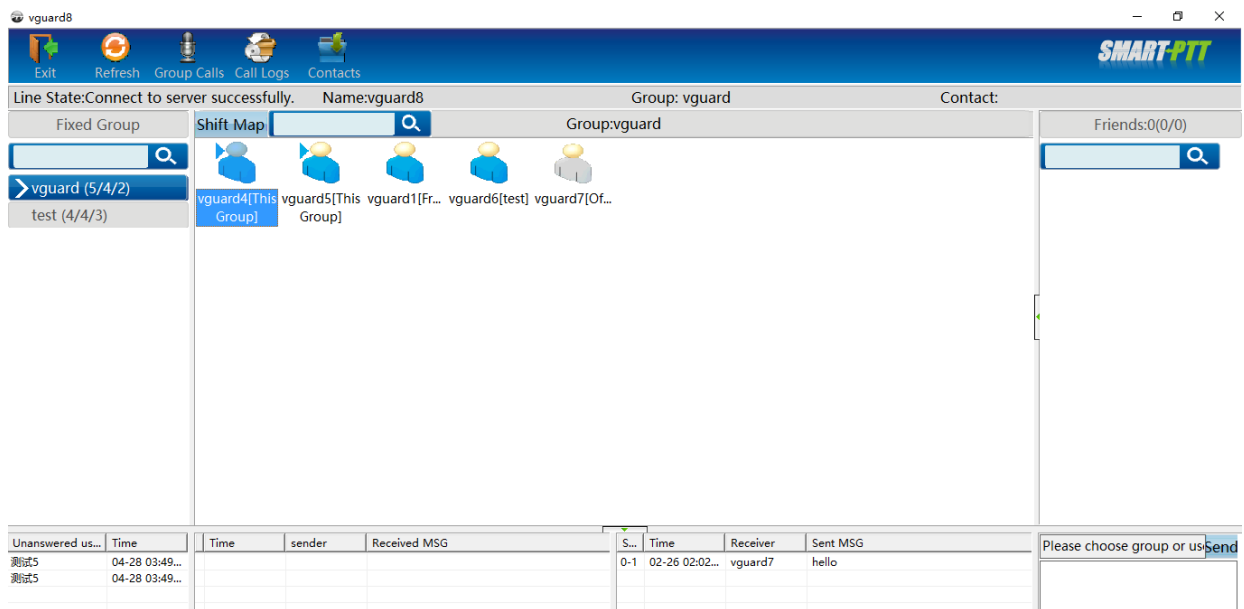
Group list can list all group information of the dispatch station. The red arrow shows dispatch station is monitoring this group, the blue arrow shows the talking group of the dispatch station. Select group, display area can show the user information. Double-click to enter a group ;select a group, and operate “enter” ,“leave”, “monitor”, “send message”, etc. on the group through the right-click menu. As Showed below.



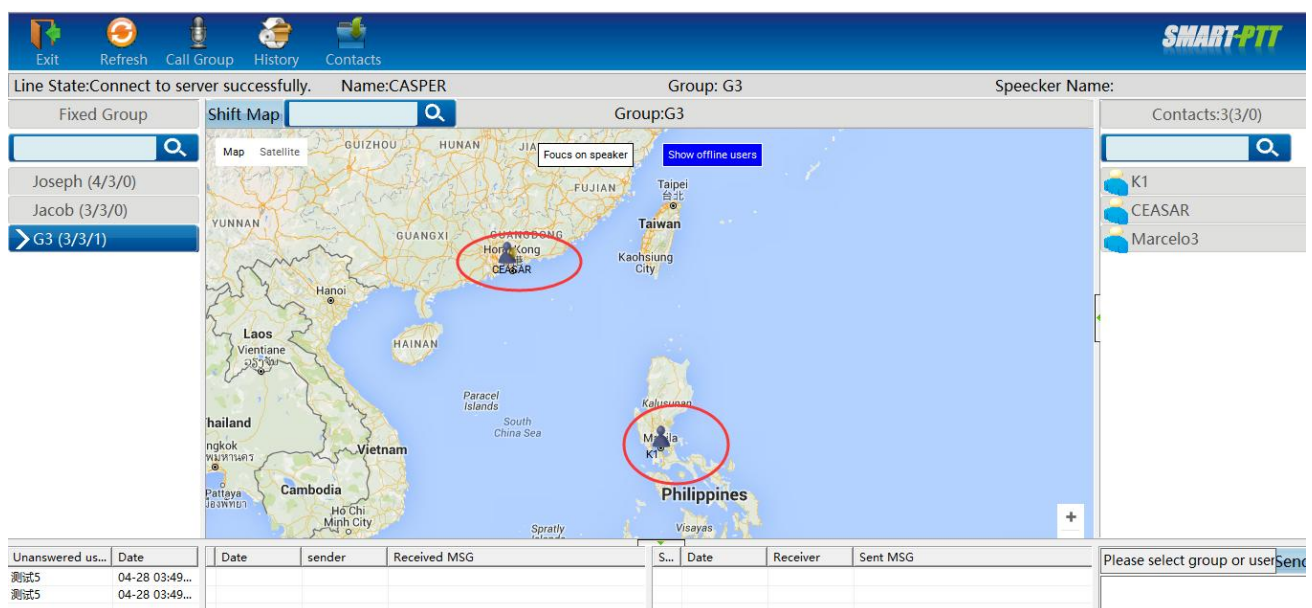
Group operation

1.2.5. User display

User display area shows user information of the selected group in the group list, including user status, user name and user's group information. There are two modes: the one is grid view mode, the other one is map mode. Switch view mode through the "shift map" button. As showed below:

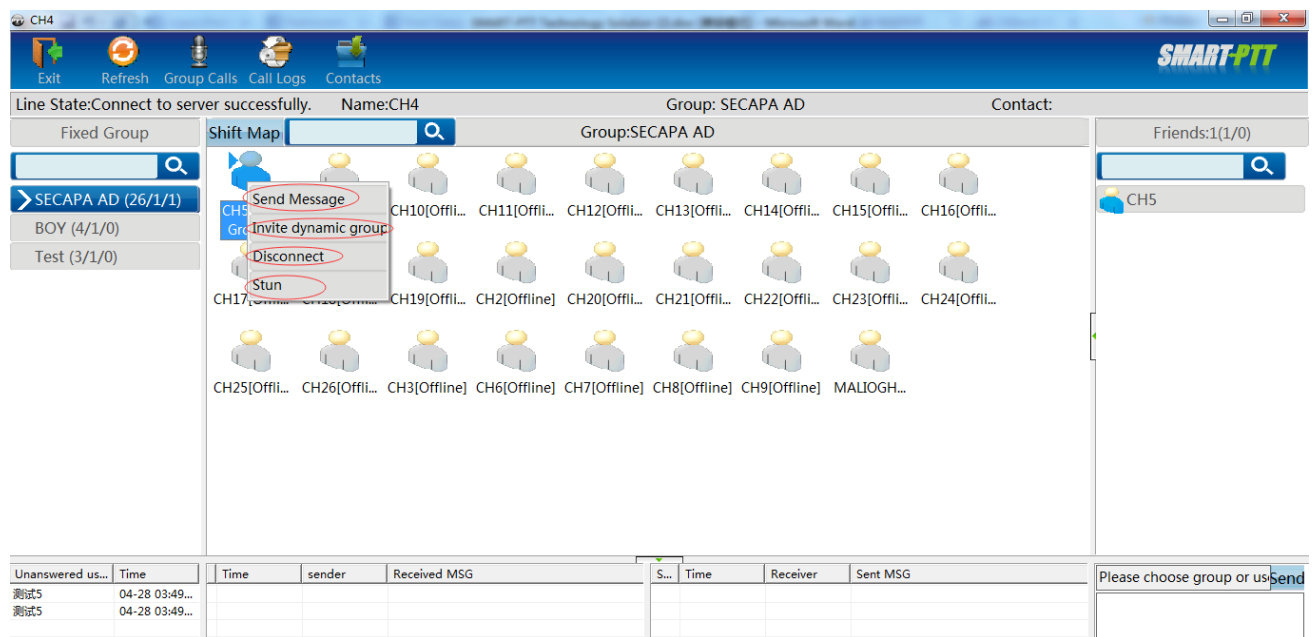


Display all users in a group

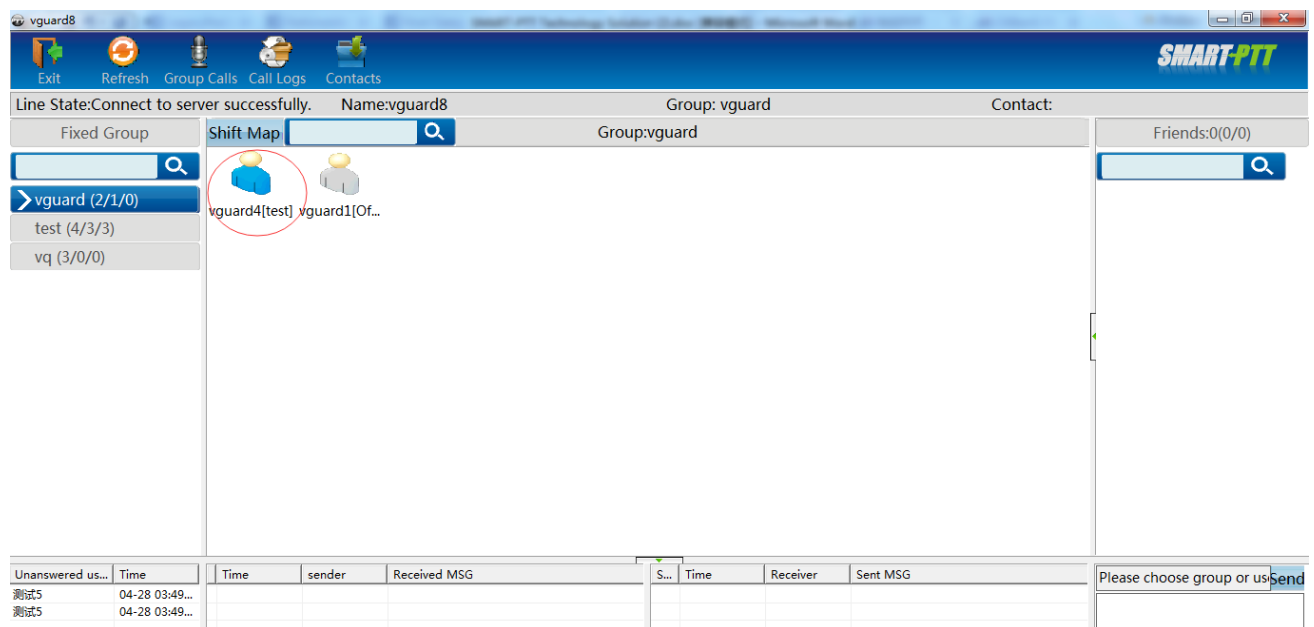


User Location

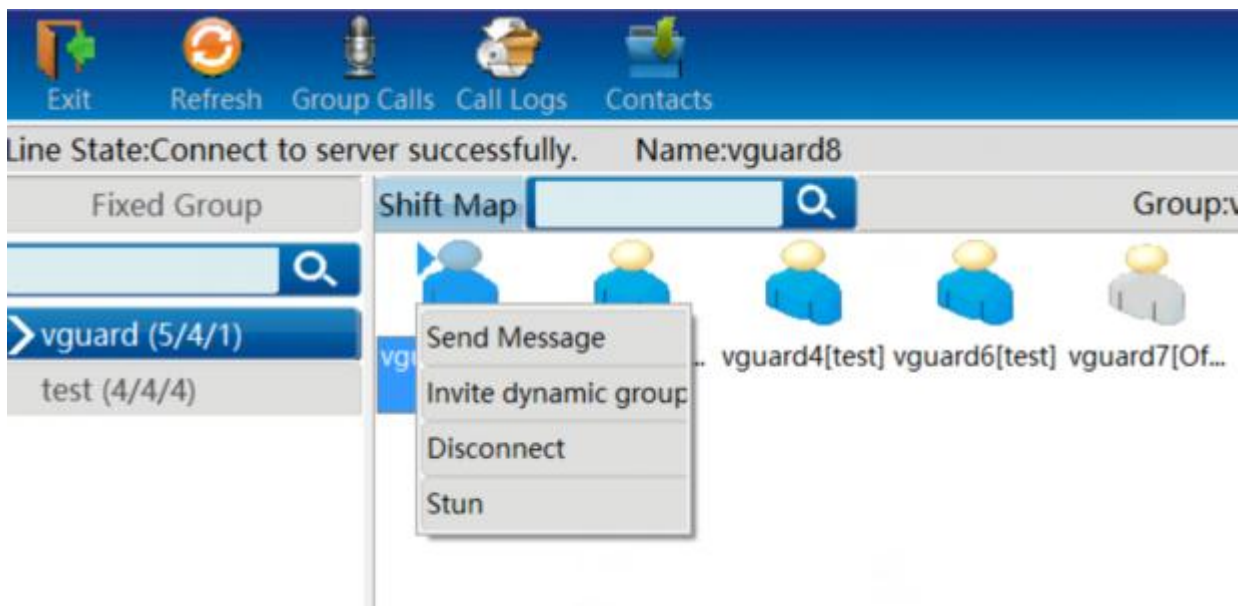
In user display area, select user and operate user through the right-click menu. operate “send message”, “invite dynamic group”, “disconnect” and “stun” on the users who are not in the group. As shown below:



Right-click on the user function

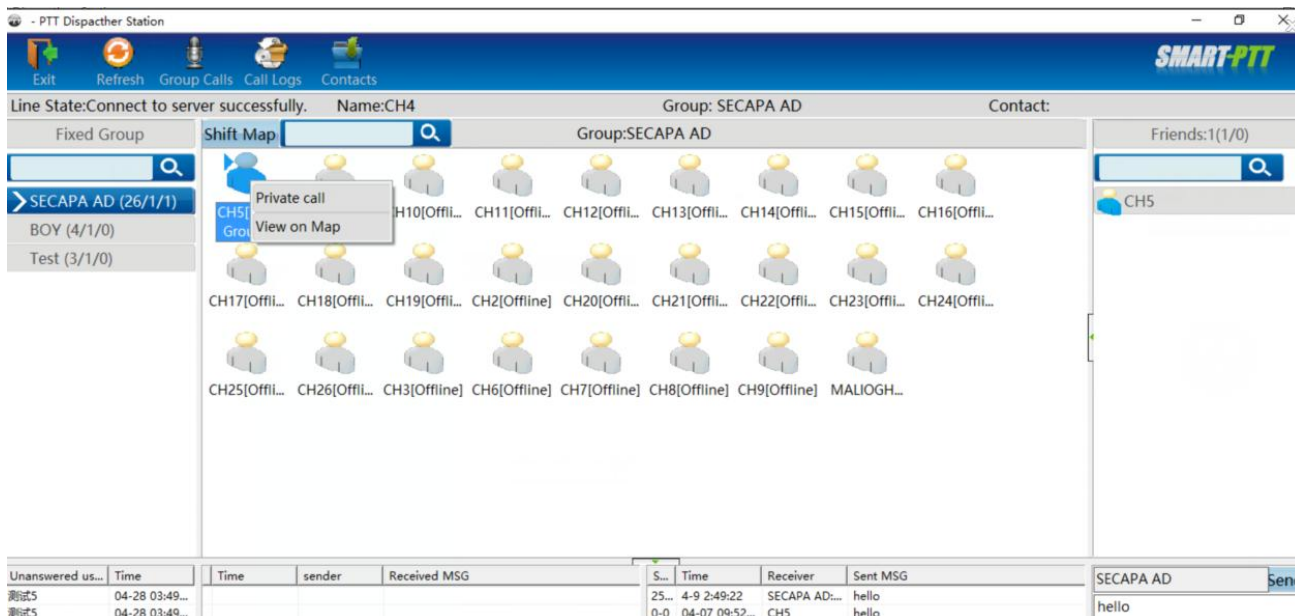


Operations on users not in the group



Operations on users in the group

Double click on the right, you can make a private call to any user or view the user's track. As shown below:



Operations private call for online user

CH4

Exit Refresh Group Calls Call Logs Contacts

SMART-PTT

Line State: Connect to server successfully. Name: CH4 Group: SECAPA AD Contact:

Fixed Group Shift Map Search Group: SECAPA AD

Search SCAPAD (26/1/1) BOY (4/1/0) Test (3/1/0)

CH5[This Group] CH10 Private call View on Map H11[Offli... CH12[Offli... CH13[Offli... CH14[Offli... CH15[Offli... CH16[Offli... CH17[Offli... CH18[Offli... CH19[Offli... CH20[Offli... CH21[Offli... CH22[Offli... CH23[Offli... CH24[Offli... CH25[Offli... CH26[Offli... CH3[Offline] CH6[Offline] CH7[Offline] CH8[Offline] CH9[Offline] MALIOGH...

Friends: 1(1/0) Search CH5

Unanswered us...	Time	Time	sender	Received MSG	S...	Time	Receiver	Sent MSG
测试5	04-28 03:49...							
测试5	04-28 03:49...							

Please choose group or user Send

Exit

Refresh

Group Calls

Call Logs

Contacts

SMART-PTT

Line State:Connect to server successfully.

Name:vguard8

Group: test

Contract:

Fixed Group

Shift Map

Group:vg

Focus on speaker

Show offline users

Track speed

mile

Export Track

GMT +8:00

vguard (2/2/2)

test (4/4/2)

vg (3/0/0)

Map

Satellite

2016-05-17 12:20:46

2016-04-01 14:32:34

View on Map:vg1

int(Up to get 100 coordinats

2016-04-18 17:31:58

Obtain

Delete

Unanswered us...	Time	Time	sender	Received MSG	S...	Time	Receiver	Sent MSG
测试5	04-28 03:49...							
测试5	04-28 03:49...							

Please choose group or usSend

SMART-PTT

Line State: Connect to server successfully. Name: vguard8 Group: test Contact:

Fixed Group

vguard (2/1/1)

test (4/3/2)

vq (3/0/0)

Shift Map

Group: vq

View on Map: vq1

int(Up to get 100 coordinates)

2016-04-01 17:31:58

Obtain Delete

Driving speed: 0.341 miles/h
Driving distance: 1.112 miles
Current time: 2016-04-01 14:27:33
Driving time: 17M 26S

Unanswered us... Time

Time sender Received MSG

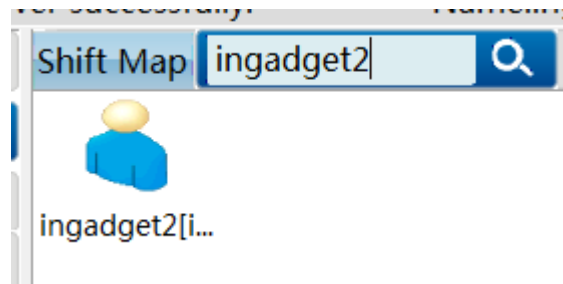
S... Time Receiver Sent MSG

Please choose group or us Send

If you click "Export track" then it will make a excel as below show,

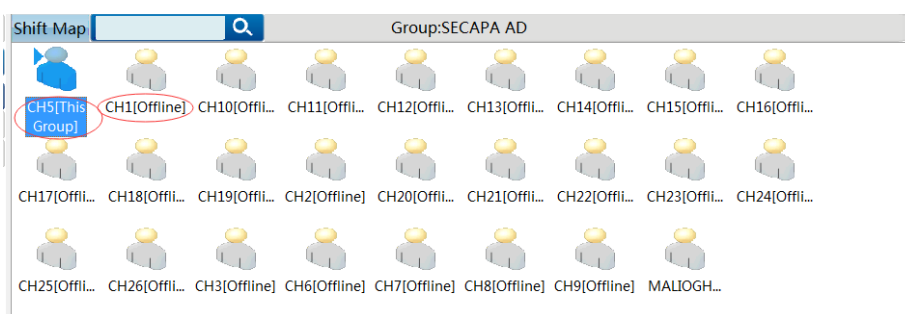
User	Date	GPS Lat	GPS Long
vq1	2016/4/1 14:32	22.35908	114.1244
vq1	2016/4/1 14:31	22.35904	114.12441
vq1	2016/4/1 14:30	22.35916	114.12421
vq1	2016/4/1 14:29	22.3592	114.12426
vq1	2016/4/1 14:28	22.35904	114.12444
vq1	2016/4/1 14:27	22.35899	114.12451
vq1	2016/4/1 14:26	22.36014	114.1258
vq1	2016/4/1 14:25	22.35979	114.12601
vq1	2016/4/1 14:24	22.35794	114.12377
vq1	2016/4/1 14:23	22.35676	114.12503
vq1	2016/4/1 14:22	22.35581	114.12604
vq1	2016/4/1 14:21	22.35223	114.12386
vq1	2016/4/1 14:20	22.35193	114.122
vq1	2016/4/1 14:19	22.35362	114.12198
vq1	2016/4/1 14:18	22.35373	114.12204
vq1	2016/4/1 14:17	22.35373	114.12197
vq1	2016/4/1 14:16	22.35362	114.12196
vq1	2016/4/1 14:15	22.35361	114.12198
vq1	2016/4/1 14:13	22.35357	114.12192
vq1	2016/4/1 14:12	22.35357	114.12191
vq1	2016/4/1 14:11	22.3537	114.12198
vq1	2016/4/1 14:10	22.35364	114.12194
vq1	2016/4/1 14:09	22.35365	114.12193
vq1	2016/4/1 14:08	22.35364	114.1219

User search bar: Input user name or character to find user. As shown below



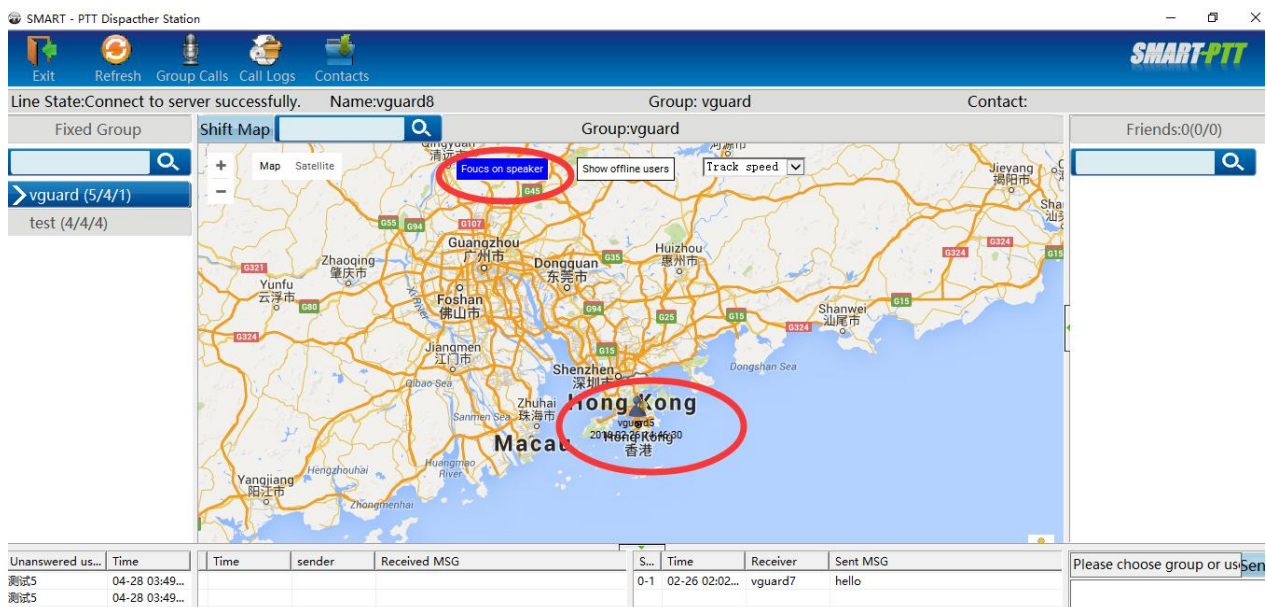
User search bar

User offline status display: In user display area, "Offline" are shown under the offline icon. As shown below:



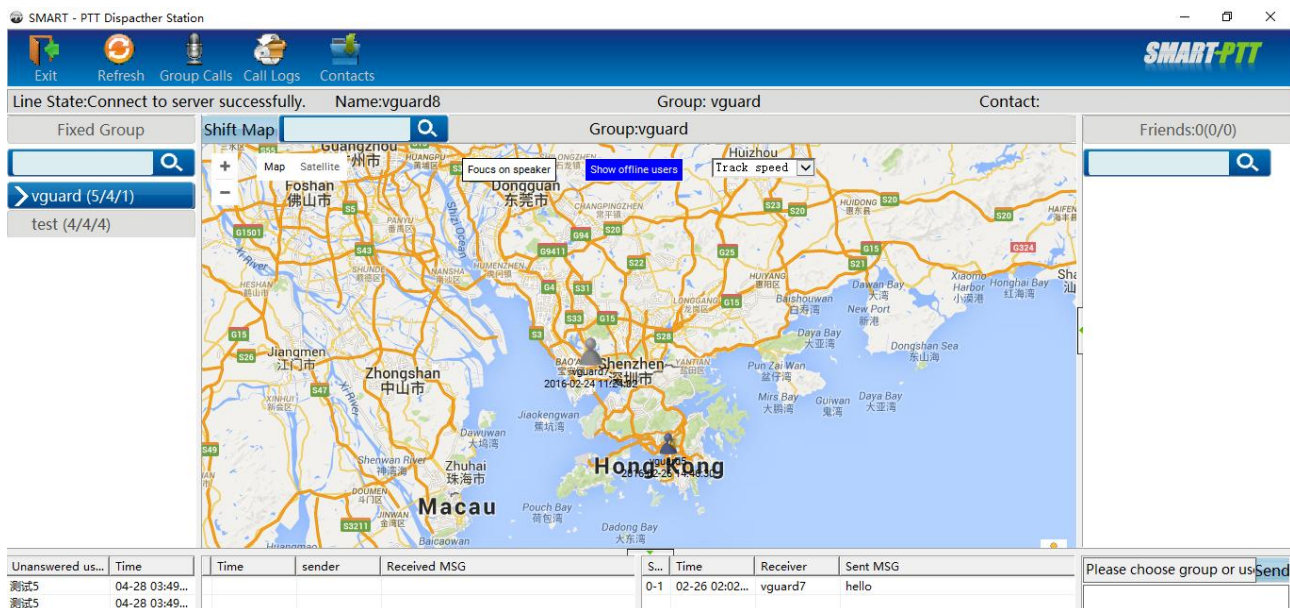
User Status

In the map mode, click "Focus on speaker", the system can lock the speaker's position automatically. As shown below:



Focus on speaker

In the map mode, click "Display offline users", all users with positioning function can be shown on the map. As show below .



Show offline users

1.3.Missed Calls List

Missed calls list can list other users' single call dispatch station and unsuccessful calls which include call users and time. You can operate "Send SMS" on the user through the right-click menu, delete the record or all records, double-click to call the user individually. As shown below:

Unanswered us...	Date
测试5	04-28 03:49...
测试5	04-28 03:49...

1.4.Received Message List

Received message list can show received messages by the dispatch station, including time, sender and message content. Double-click the record to show the message details in the auxiliary display area. As shown below:

Date	sender	Received MSG	M...	U...

Received message

1.5.Sent Message List

1.6.Sent message list can show the sent messages records by the dispatch station, including time, receiver, message content, the user qty of received or confirmed message, etc. Double-click the record to show the messages details in the auxiliary display area. As shown below:

S...	Date	Receiver	Sent MSG	M...	U...
1-0	10-10 5:54:32	ingadget2	hello,how are today	4	3...
1-0	10-10 5:54:31	ingadget2	hello,how are today	3	3...
0-1	10-10 5:54:30	ingadget2	hello,how are today	2	3...
0-1	10-10 5:54:27	ingadget2	hello,how are today	1	3...

Sent message record

1.7.Message Sent Area

Message sent area has the function that the dispatch station sends messages to group or a certain user, 30 words of the message content at most. As shown below

State	Date	Receiver	Sent MSG
0-0	01-18 10:24...	astest2	hello

Sent message frame

ingadget2;	Send
hello,how are today	